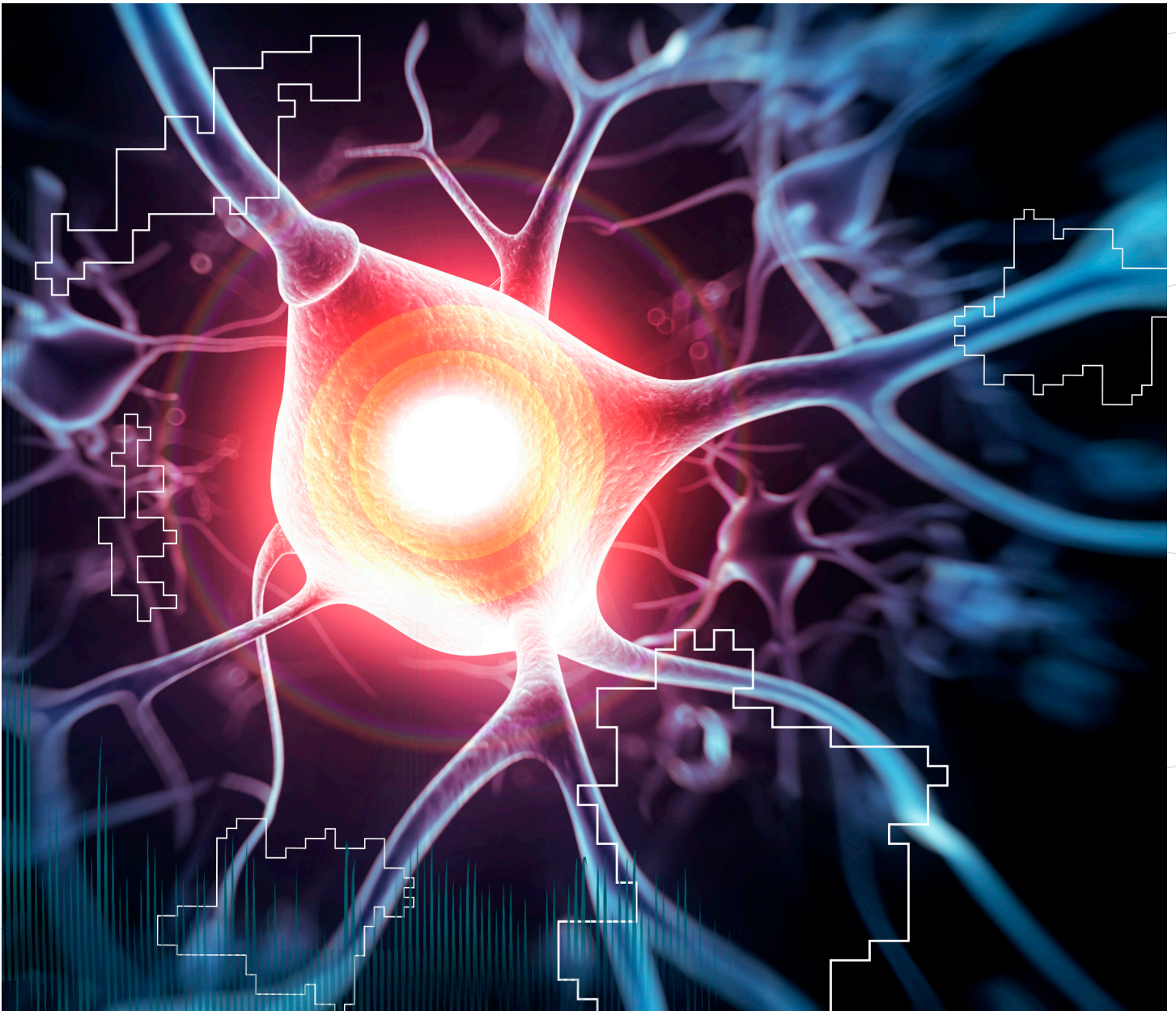


NEUROLOGY

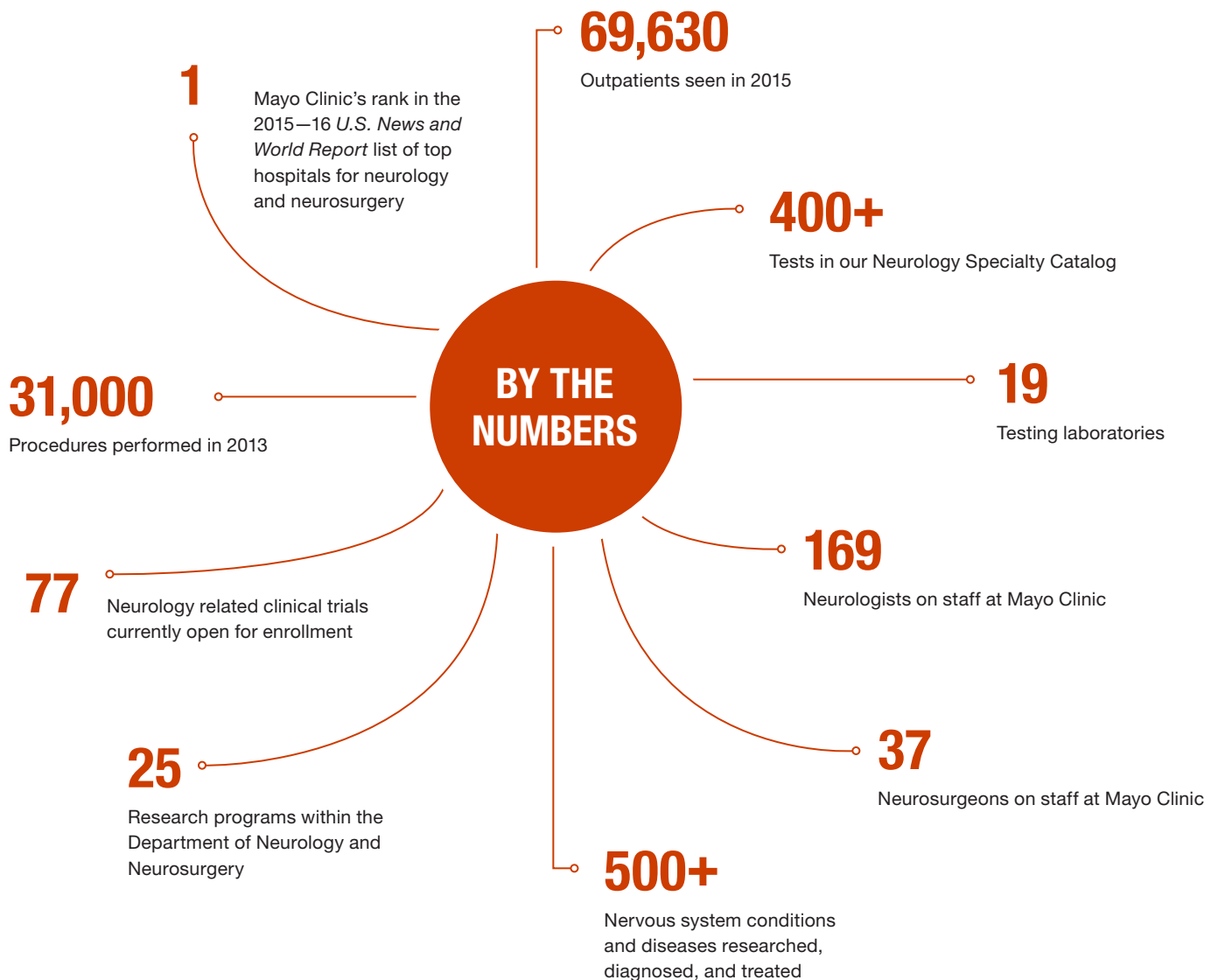
TESTING TO YIELD A DEFINITIVE DIAGNOSIS AND OPTIMAL TREATMENT PATH



MAYO CLINIC RESEARCH AND PRACTICE FINDINGS DRIVE OUR UNIQUE TESTING APPROACH

We know the importance of laboratory testing in a patient's episode of care. Our unique combination of specialized laboratories and neurology patient care clinics gives us the ability to:

- ▶ Put into practice clinically proven, cost effective, patient care-driven testing approaches.
- ▶ Provide definitive diagnoses and identify root causes of presenting disorders.
- ▶ Establish and guide optimal treatment paths for hundreds of neurological conditions.
- ▶ Develop state-of-the-art tests, and validate them in a clinical setting.



OUR TESTS IDENTIFY THE CAUSE OF YOUR PATIENT'S PRESENTING DISORDER TO HELP MAKE A DEFINITIVE DIAGNOSIS AND BUILD AN EFFECTIVE TREATMENT PLAN

PRESENTING DISORDERS

AUTONOMIC	NEUROMETABOLIC
BEHAVIORAL	NEUROMUSCULAR
CEREBROVASCULAR	NEURO-ONCOLOGY
CNS INFECTION	NEURO-OPHTHALMOLOGY
DEMYELINATING DISEASES	PAIN
EPILEPSY	PEDIATRIC
HEADACHE	SLEEP
MOVEMENT DISORDERS	SPINE
NEUROIMMUNOLOGY	



TEST FAMILIES

AUTOIMMUNE
DIABETES
DRUG/TOXINS
GENETICS
INFECTIONS
TOXICOLOGY
TUMORS
VITAMIN DEFICIENCY



OUTCOMES

DEFINITIVE DIAGNOSIS
OPTIMAL TREATMENT PATH FORWARD

CONSULT WITH MAYO CLINIC EXPERTS ABOUT DIAGNOSES AND TREATMENTS

When you partner with Mayo Medical Laboratories, you extend your network to include some of the world's leading neurology experts.

Mayo Clinic clinicians, laboratorians, and genetic counselors are available to discuss testing options, interpret results, or help with case review and coordination.

COMPREHENSIVE SUPPORT & BILLING SOLUTIONS

A test result is only one aspect of laboratory medicine and pathology, which is why we have made a substantial investment in our customer service and logistics teams:

- ▶ Mayo Laboratory Inquiry is available 24 hours a day. We answer all calls personally, resolving more than 99% of inquiries with one phone call.
- ▶ Dedicated support teams located in your region can be contacted regarding any laboratory matter.
- ▶ Our service and logistics experts guide you through reimbursement or other billing-related questions, including third-party billing and prior authorization.

WE LEAD THE WAY IN THE DIAGNOSIS AND TREATMENT OF REVERSIBLE NEUROLOGIC DISORDERS

Led by Mayo Clinic neurologists, our testing specializes in the diagnosis and treatment of reversible neurologic disorders. These disorders are commonly mistaken for multiple sclerosis, stroke, and other untreatable degenerative disorders such as:

- ▶ Subacute onset neurological disorders
- ▶ Unexplained encephalopathy
- ▶ Acute/Subacute dementia
- ▶ Refractory seizure disorders
- ▶ Optic neuritis, myelitis, and MS mimics
- ▶ Gastrointestinal dysmotility
- ▶ Dysautonomia
- ▶ Neuromuscular junction disorders

FOR INFORMATION ABOUT OUR NEUROLOGY TESTING, CONTACT US AT 855-516-8404

**FOR MORE INFORMATION ABOUT
NEUROLOGY TESTING, VISIT**

MayoMedicalLaboratories.com/neurology

 mayomedicallaboratories.com  news.mayomedicallaboratories.com  [/mayocliniclabs](https://www.facebook.com/mayocliniclabs)  [@mayocliniclabs](https://twitter.com/mayocliniclabs)

MAYO CLINIC | Mayo Medical Laboratories | 3050 Superior Drive NW | Rochester, MN 55901 | MayoMedicalLaboratories.com | 800-533-1710

©2016 Mayo Foundation for Medical Education and Research. All rights reserved. MAYO, MAYO CLINIC, Mayo Medical Laboratories and the triple-shield Mayo logo are trademarks and service marks of MFMER.
MC2775-86rev0316