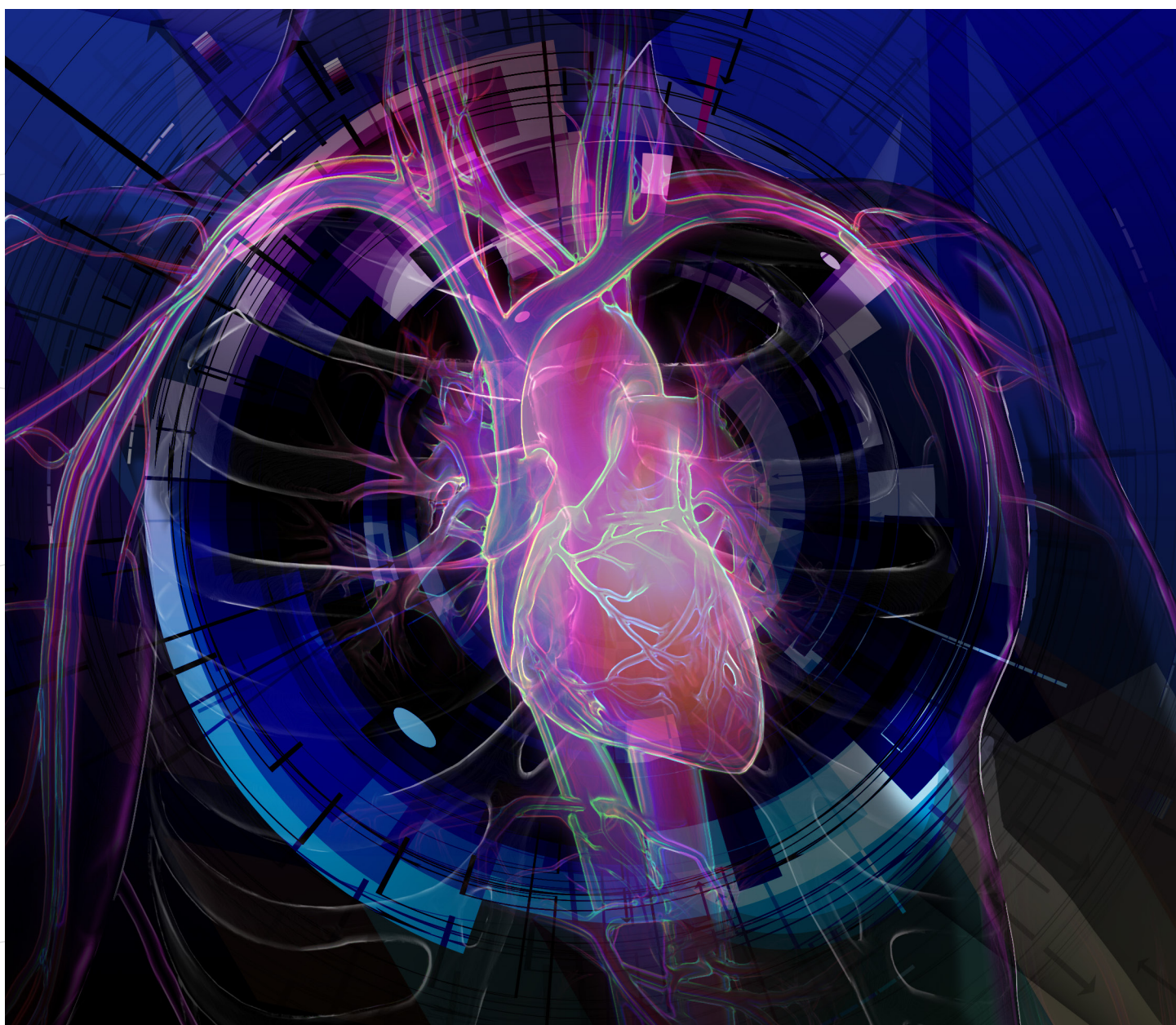


CARDIOLOGY

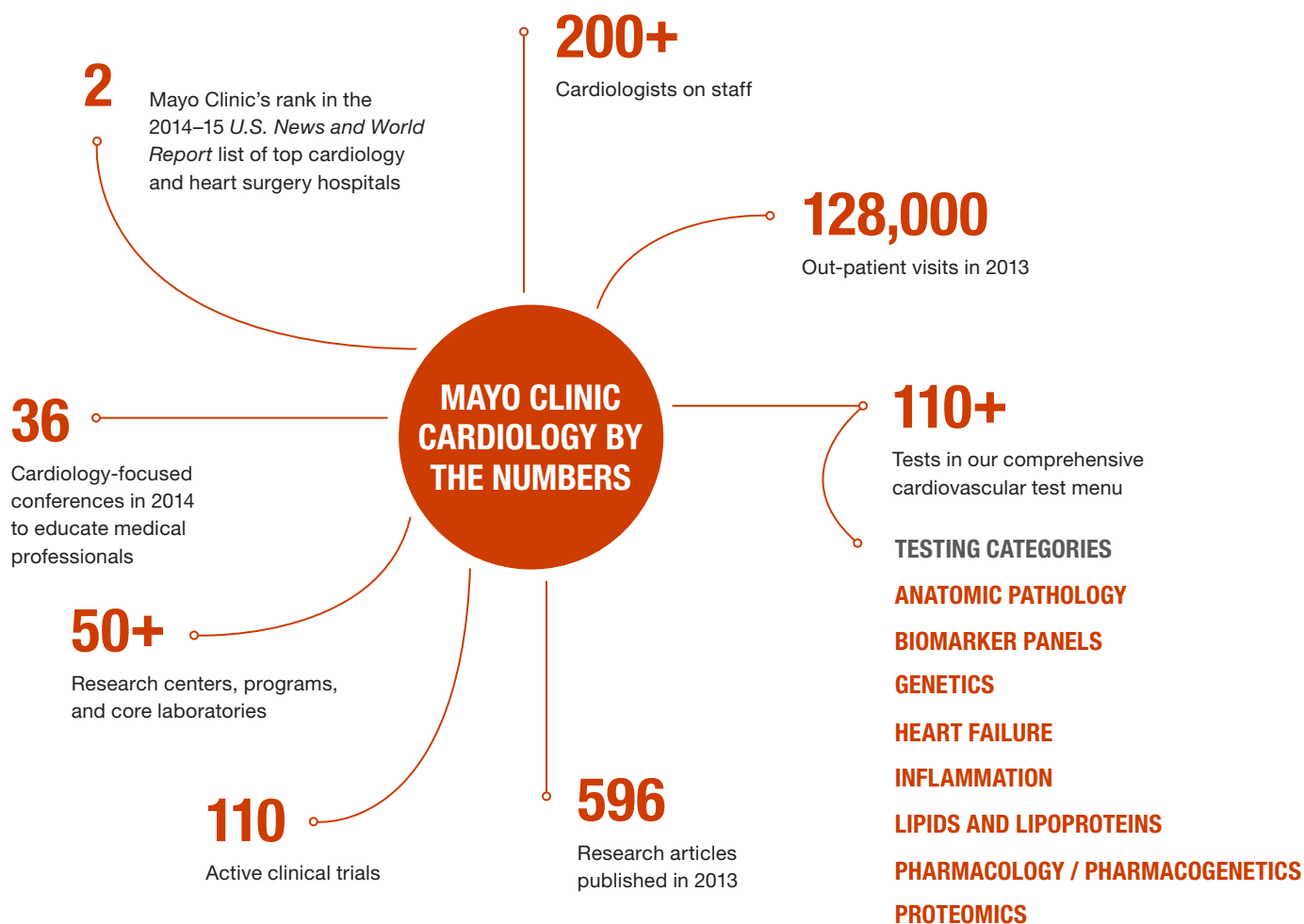
EVIDENCE-BASED TESTING APPROACHES FOR CORRECT DIAGNOSES AND TREATMENT



REDUCE DOWNSTREAM COSTS WITH DIAGNOSTIC AND PROGNOSTIC TESTING

At Mayo Clinic, we know the importance of laboratory testing in a patient's episode of care. Our unique combination of specialized laboratories and cardiology patient-care clinics allows us to:

- ▶ **Reduce downstream costs** with care-driven testing approaches that produce definitive diagnoses.
- ▶ **Evaluate and treat patients** using the most advanced techniques and technologies.
- ▶ **Identify at-risk patients** who require earlier intervention or increased surveillance.
- ▶ **Develop and validate state-of-the-art tests** in a clinical setting.



TARGETED GENETIC TESTING PANELS OFFER HIGH CLINICAL UTILITY

Next-generation sequencing (NGS) is an accurate, cost-effective method of identifying inherited variants across numerous genes known to be associated with cardiac disorders.

Our targeted cardiovascular NGS panels include evaluations for:

HYPERTROPHIC CARDIOMYOPATHY	<i>26 GENES</i>
DILATED CARDIOMYOPATHY	<i>30 GENES</i>
COMPREHENSIVE CARDIOMYOPATHY	<i>55 GENES</i>
ARRHYTHMOGENIC CARDIOMYOPATHY	<i>9 GENES</i>
MARFAN SYNDROME & RELATED DISORDERS	<i>13 GENES</i>
NOONAN SYNDROME & RELATED DISORDERS	<i>11 GENES</i>
LONG QT SYNDROME	<i>13 GENES</i>
BRUGADA SYNDROME	<i>9 GENES</i>

CONSULT WITH MAYO CLINIC GENETIC COUNSELORS ABOUT TESTING OPTIONS

Genetic counselors bring real value to proper test utilization by making sure the most appropriate test has been ordered. On average, Mayo Clinic genetic counselors modify 8% of all reviewed genetic test orders¹, reducing health care costs and benefiting patient care.

Mayo Clinic genetic counselors are available to:

- ▶ Support the ordering process
- ▶ Provide additional information about testing options
- ▶ Offer results interpretation
- ▶ Assist with case review and coordination

1. Kotzer KE, Riley JD, Conta JH, et al: Genetic testing utilization and the role of the laboratory genetic counselor. Clin Chim Acta 2014;427:193-195

IDENTIFY AT-RISK PATIENTS FOR EARLY INTERVENTION

Standard cardiovascular risk factors only predict about 65% of individuals who will go on to have a cardiovascular event. That means we must identify a patient's residual risk in order to target lifestyle and pharmaceutical intervention.

Our Cardiovascular Risk Marker Panel (Mayo ID: CVRMP) assesses a patient's risk of developing cardiovascular disease, major adverse cardiovascular events, or ischemic cerebrovascular events.

The panel evaluates and interprets:

- ▶ Non-HDL Cholesterol
- ▶ Calculated LDL
- ▶ HDL Cholesterol, CDC
- ▶ Cholesterol, Total, CDC
- ▶ Triglycerides, Total, CDC
- ▶ Lipoprotein (a)
- ▶ C-Reactive Protein, High Sensitivity

24/7 LAB SUPPORT AND BILLING SOLUTIONS

- ▶ Mayo Laboratory Inquiry answers all calls personally, 24 hours a day, every day. We resolve more than 99% of inquiries with a single phone call.
- ▶ Dedicated support teams located in your region offer support on any laboratory matter.
- ▶ Our service and logistics experts guide you through reimbursement or other billing-related questions, including third-party billing and prior authorization.

Telephone 855-516-8404

Email rstmmlcardiology@mayo.edu

DIRECTORS

- 1 LINNEA BAUDHUIN, PH.D.
- 2 LESLIE DONATO, PH.D.
- 3 ALLAN JAFFE, M.D.
- 4 JOSEPH MALESZEWSKI, M.D.
- 5 JEFF MEEUSEN, PH.D.



CARDIOLOGY-FOCUSED GENETIC COUNSELORS

- 1 MICHELLE KLUGE, M.S., CGC
- 2 KATE KOTZER, M.S., CGC



TAP INTO THE EXPERTISE OF MAYO CLINIC

The Cardiovascular Laboratory Medicine Group within Mayo Clinic works to accommodate the growing demand for development, validation, and use of analytes to predict risk for both primary and secondary prevention.

Focused on acute-care cardiology, risk stratification, and genomics, the group integrates laboratory cardiology with its colleagues in cardiology, pediatric cardiology, genetics, cardio-thoracic and vascular surgery—as well as cerebrovascular specialists in neurology.

FOR MORE INFORMATION ABOUT CARDIOVASCULAR TESTING, VISIT

MayoMedicalLaboratories.com/cardiology