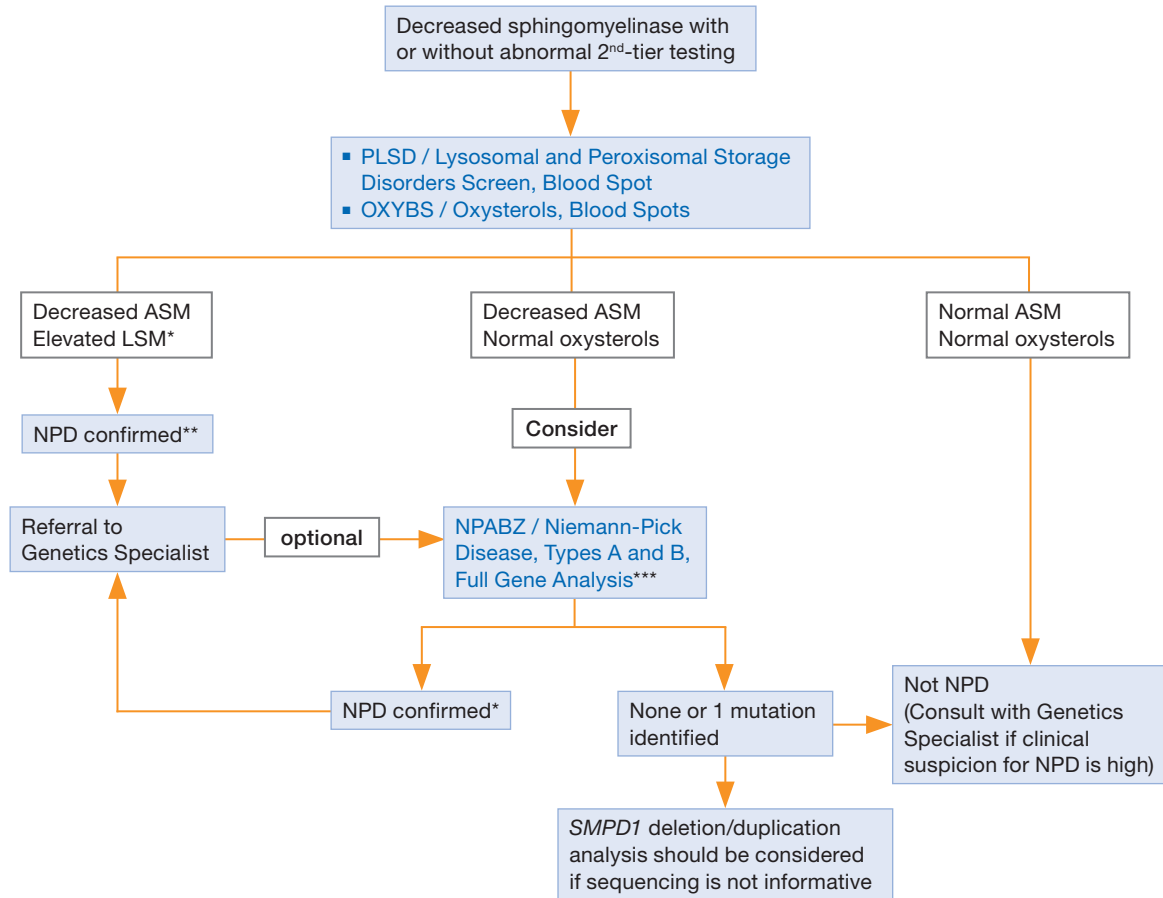


## Newborn Screen Follow-up for Niemann Pick Type A and B



ASM=acid sphingomyelinase  
LSM=lyso-sphingomyelin  
NPD=Niemann-Pick Disease

\* Cholestane-3 beta, 5 alpha, 6 beta-triol (COT), and/or 7-ketocholesterol (7-KC) may also be elevated

\*\* Limited genotype-phenotype correlation is known. Clinical correlation is required to make a diagnosis of type A versus type B

\*\*\* Consider targeted mutation analysis (NPABP / Niemann-Pick Disease, Types A and B, Mutation Analysis) if the patient is of Ashkenazi Jewish descent or from the Maghreb region of North Africa, Chile, Saudi Arabia, or Turkey