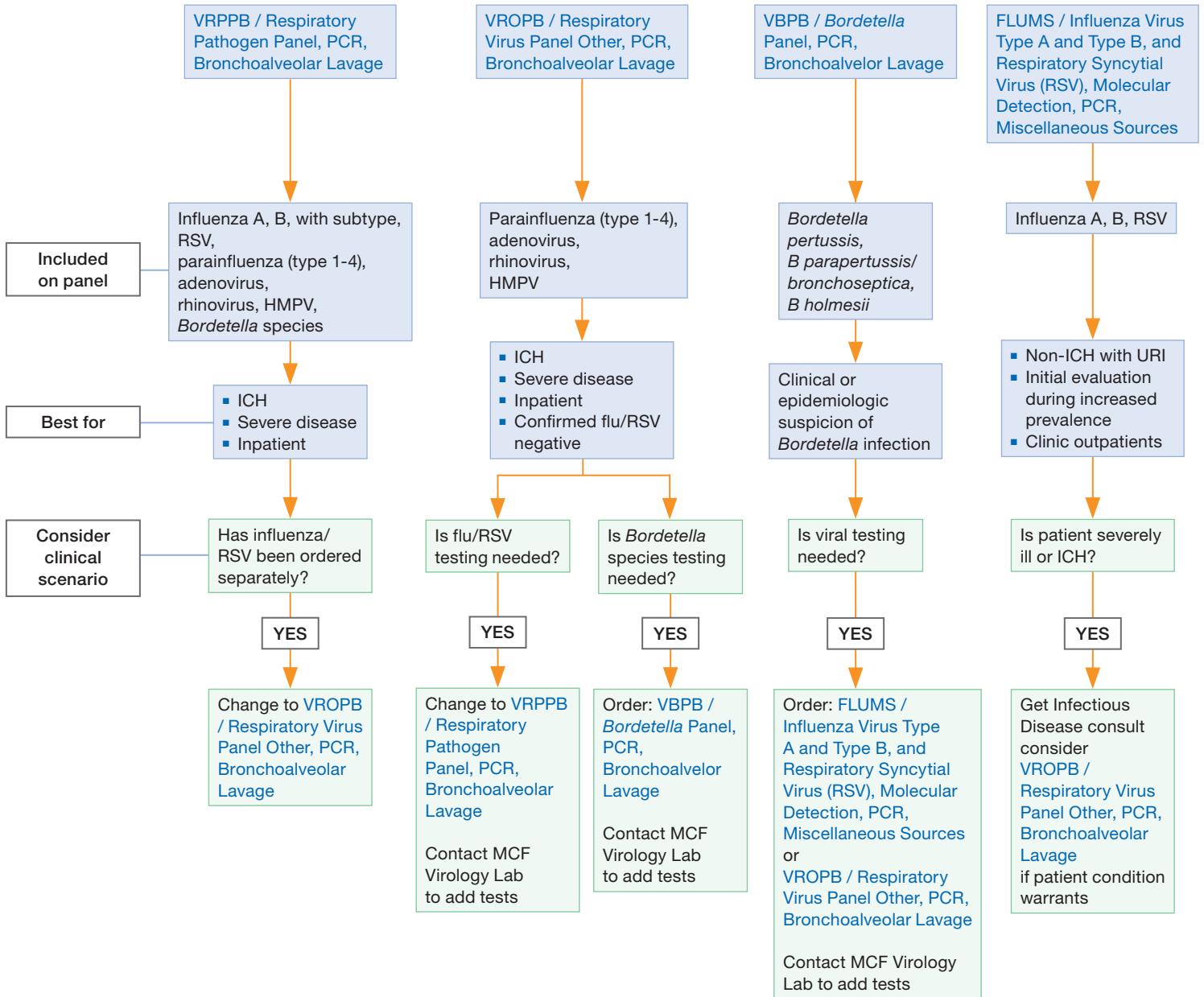


Respiratory Virus Algorithm for Bronchoalveolar Lavage Specimens



All listed tests accept BAL specimens
 BAL=Bronchoalveolar Lavage
 RSV=Respiratory syncytial virus
 HMPV=Human metapneumovirus
 ICH=Immunocompromised Host
 ICU=Intensive Care Unit
 URI=Upper Respiratory Infection
 MCF=Mayo Clinic Florida