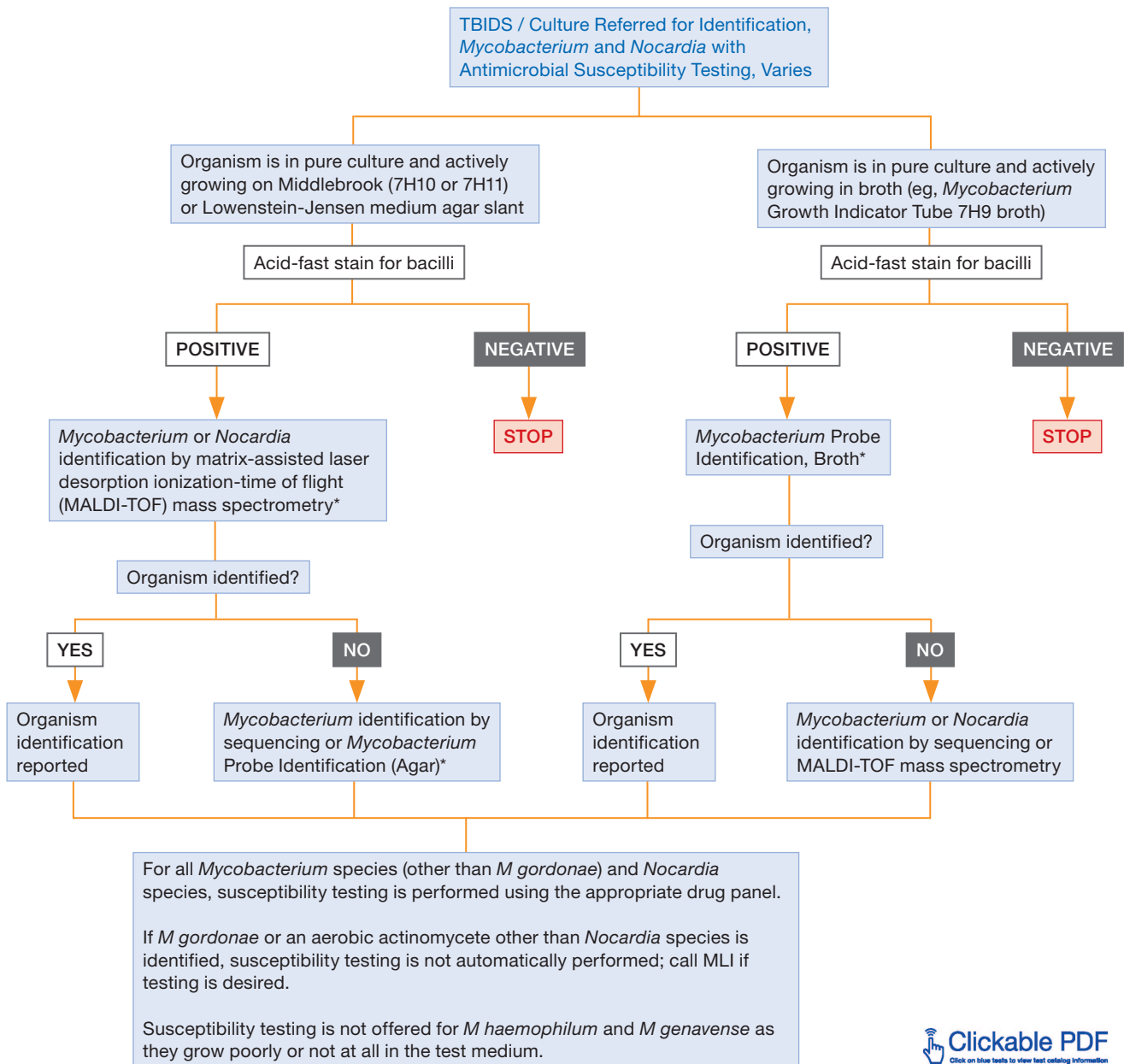


Culture Referred for Identification and Susceptibility for *Mycobacterium* and *Nocardia* Algorithm



* Nucleic acid probes used for identification, when applicable, include those for *Mycobacterium avium*-intracellulare complex, *Mycobacterium gordonae*, and *Mycobacterium tuberculosis* complex. MALDI-TOF mass spectrometry or 16S rDNA sequencing is used for identification, when applicable, for slowly and rapidly growing *Mycobacterium* species and aerobic actinomycetes (including *Nocardia* species and *Streptomyces* species).